



VESSELDOVE

Prepared for
VESSELDOVE

2025

SECTION

03

Introduction

05

About Us

07

Our Mission

08

Problem

09

Solution

10

Advantages

11

SeaVision

17

Vessel Details

19

Port Detail

20

Advanced Details

21

Marketing
Automation



Help them succeed by offering innovative and effective solutions with **VESSELDOVE**

In today's rapidly changing world, innovative and effective solutions are the key to success for businesses and individuals. At VESSELDOVE, we have a vision that can turn challenges into opportunities and realize ideas that transcend borders.

Our goal is to deeply understand the needs of our customers and business partners and to create smart, sustainable and unique solutions that will support their success.

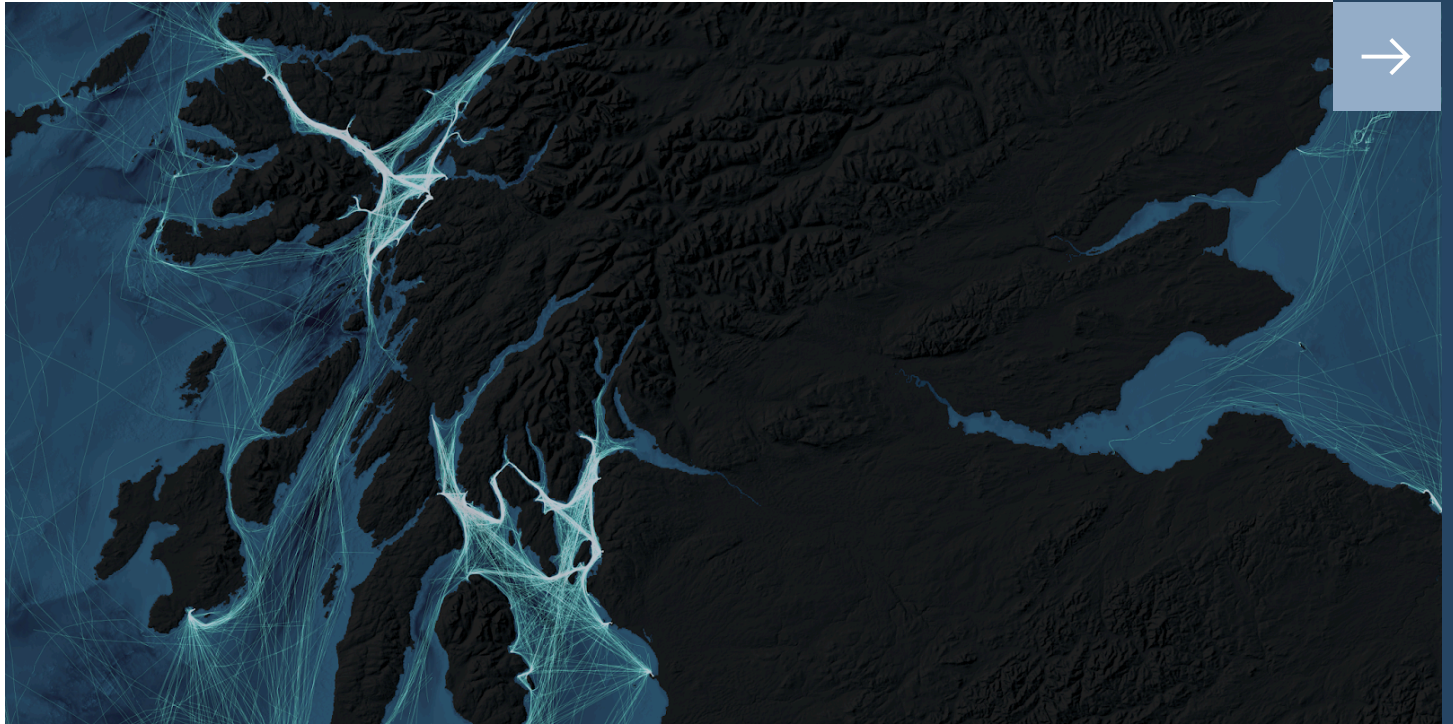


VESSELDOVE

Vesseldove's Solution for Maritime Service Excellence

Enhance your maritime operations with Vesseldove's powerful suite of tools! From real-time tracking to automation, stay ahead of the curve.

Why We Are ?



Visionary Approach



Sustainable Growth



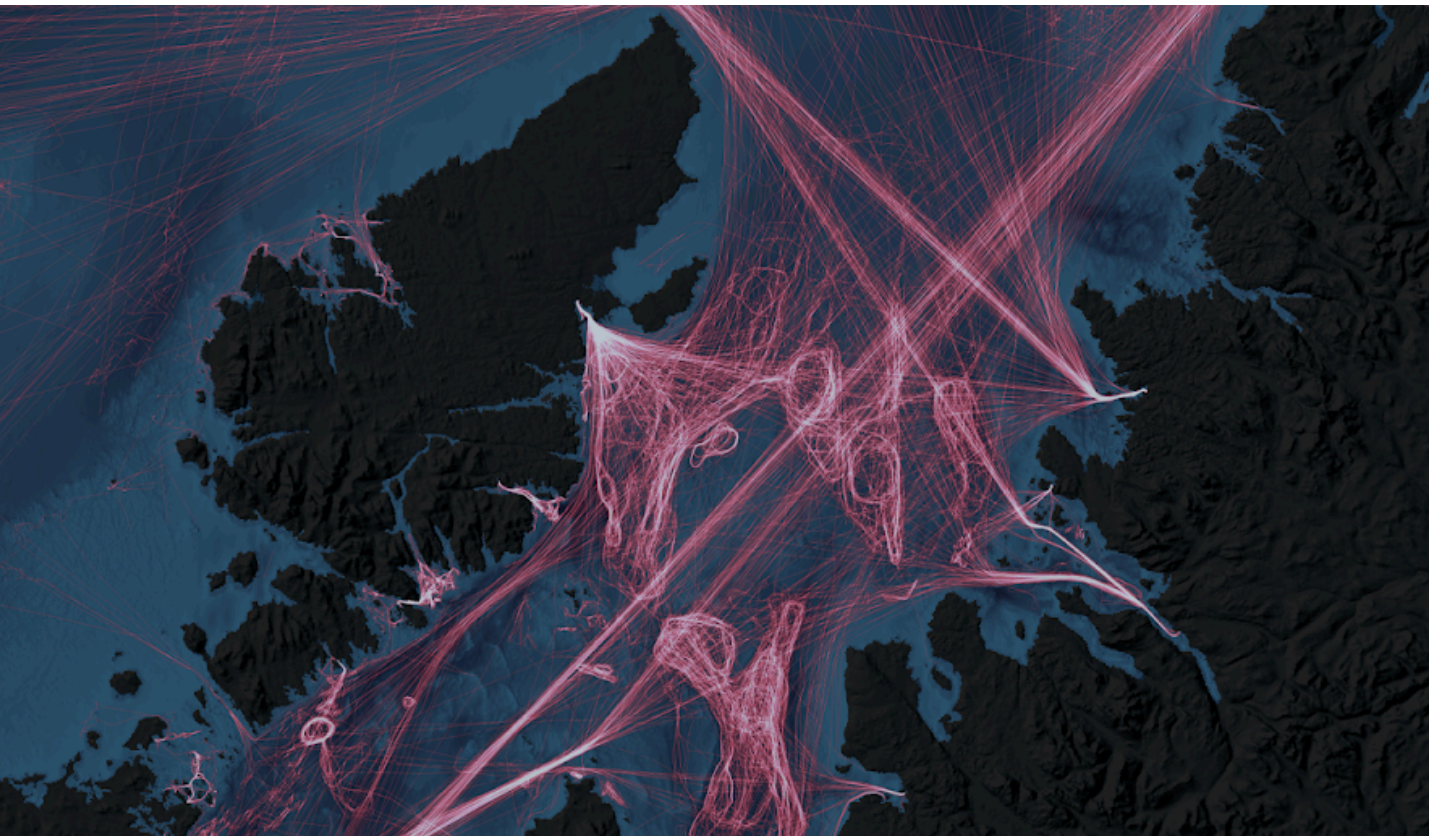
Global Collaboration



**Strong Global Network
and Collaboration**

Offering innovative, sustainable and reliable solutions by anticipating the rapidly changing requirements of the maritime industry, VESSELDOVE aims to increase operational efficiency and set a new standard in the maritime world by strengthening communication between stakeholders through real-time data analysis, advanced technological integration, global collaboration network and strong engineering approach.

Who Can Use It?



Commercial ship companies operating in the maritime sector



Companies providing services to ships (suppliers, agents, insurance companies, etc.)



Entrepreneurs who want to do business in the maritime sector

Vesseldove is an indispensable software solution for companies operating in the maritime sector. By connecting ship owners and service companies on a single platform, Vesseldove streamlines communication, boosts operational efficiency, and fosters real-time collaboration. Its user-friendly interface and robust features enable stakeholders to monitor, track, and manage vital maritime processes with ease, making Vesseldove an essential tool for staying competitive in a rapidly evolving industry.

Redefining Global Maritime Tracking with VESSELDOVE

Vesseldove, a ground breaking maritime software solution developed by EnteoSoft LTD., is revolutionizing the shipping industry with its innovative approach to real-time tracking, operational efficiency, and data-driven decision-making.

Providing state-of-the-art maritime software solutions that empower the maritime industry with real-time tracking, advanced analytics and comprehensive operational support, enabling smarter decisions and increased operational efficiency.



Problem



**Real-time Data
Monitoring and Reliability**

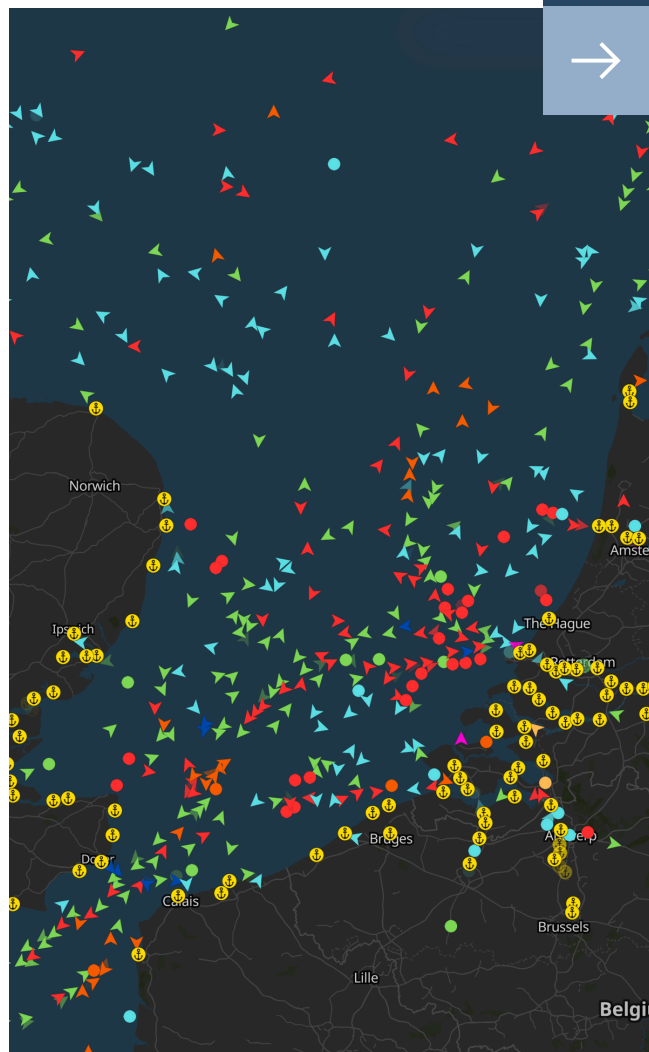


**Data Integration and
Process Optimization**



**Lack of User Experience and
Customizability**

In today's dynamic maritime environment, ensuring robust real-time data monitoring and reliability, seamlessly integrating diverse data streams for optimized process efficiency, and delivering an intuitive, customizable user experience collectively pose significant challenges that demand innovative, holistic solutions to enhance operational safety, decision-making precision, and overall industry performance. As maritime operations grow more complex and interconnected, industry stakeholders face mounting pressure to adopt robust strategies that deliver real-time visibility, seamless data integration, and user-focused flexibility.



By harnessing advanced technologies, fostering cross-platform collaboration, and prioritizing intuitive interfaces, organizations can transcend traditional barriers—such as fragmented information flows and limited customization—thereby enhancing operational agility, risk mitigation, and decision-making accuracy. This holistic, forward-thinking approach not only strengthens overall safety standards but also drives sustainable growth and innovation across the global maritime landscape.

Steps

→ STEP 01

SeaVision

Vesseldove SeaVision Suite offers unparalleled maritime visibility, enabling users to track and monitor vessels in real time with cutting-edge AIS and satellite technology. This robust solution ensures no vessel goes unnoticed, enhancing operational awareness and decision-making.

→ STEP 02

Vessel Detail

Dive deeper into individual vessel information, exploring detailed specifications, ownership records, and operational history. Real-time updates on vessel movements and statuses provide valuable insights for efficient fleet management and strategic planning.

→ STEP 03

Port Detail

Access comprehensive port data, including facilities, traffic density, and vessel activity. By staying informed on arrivals, departures, and port conditions, you can plan voyages more effectively, minimize delays, and optimize overall port operations.

→ STEP 04

Advanced Company Detail

Leverage advanced analytics and data filtering to gain in-depth insights into maritime operations. Historical tracking and predictive analysis help inform decision-making, enabling precise route optimization, risk assessment, and performance evaluation.

→ STEP 05

Marketing Automation

Enhance your outreach in the maritime sector with automated marketing tools designed to streamline communications and client engagement. Target the right audience, personalize campaigns, and improve customer relationships for sustained business growth.

ADVANTAGES

Advantages

1

Increases the business volumes of companies serving in the maritime sector.

2

It increases the advertising and promotional activities of companies by providing mail marketing services.

3

Expands the customer network of companies.

4

It offers a clean and useful data repository thanks to its automatic filtering system.

5

It offers real-time statistics and analytics, so users can track the performance of the emails they send.

6

It provides fast data repository access with an easy-to-use and user-friendly interface.

7

It provides access to fast and accurate contact information of companies operating in the maritime sector.

8

It automates mail marketing processes and completes mail certifications, making it easier to pass through spam and ad filters.

This solution combines advanced marketing automation with real-time data integration, helping companies expand their customer networks. By refining outreach strategies based on live metrics, businesses can boost engagement and foster sustainable growth.

With an intuitive interface, teams can effortlessly manage filters, track essential metrics, and oversee maritime data. This streamlined approach ensures timely insights and maintains operational efficiency, even in rapidly shifting market conditions.

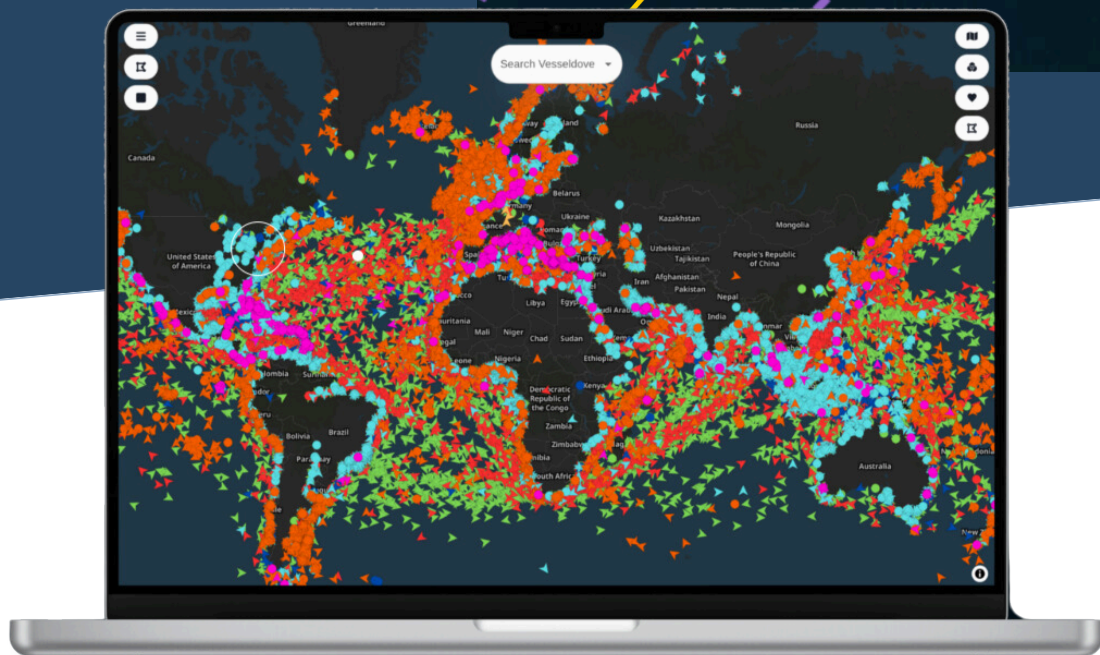
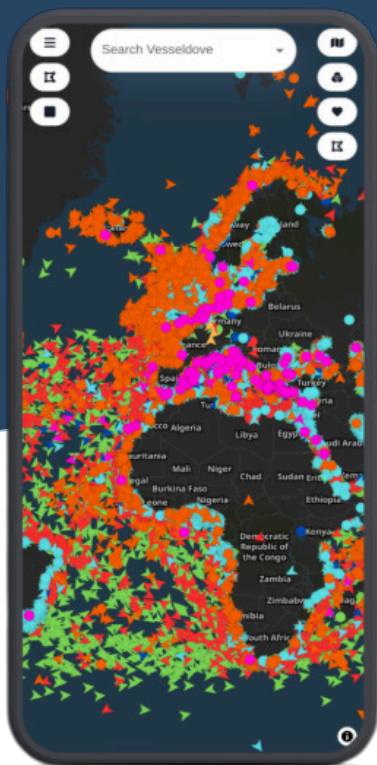
Thanks to a flexible architecture, the platform easily adapts to evolving business needs. Companies can scale their operations, add new services, and maintain a competitive edge—all without disrupting existing workflows.

SeaVision

In today's world of rapidly advancing technological developments and increasing global competition, the maritime industry is increasingly recognizing the importance of innovative solutions.

SeaVision stands out as a platform that shapes the future of the industry by bringing together all the basic features required by modern maritime operations. With its advanced data integration, real-time monitoring and smart analytics solutions, it takes revolutionary steps in ship tracking, route optimization and operational efficiency.

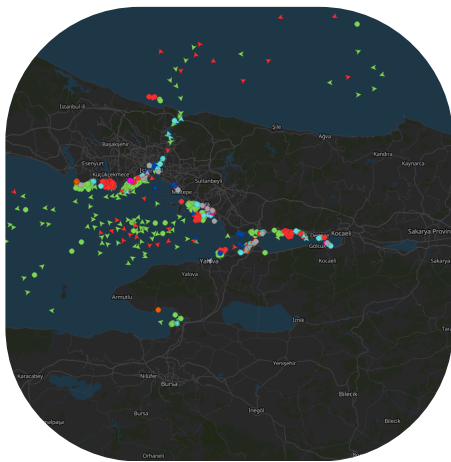
SeaVision's user-friendly interface enables maritime professionals to easily manage complex data flows, while its customizable structure offers solutions suitable for businesses of different scales and needs.





Map Type Layer Customization

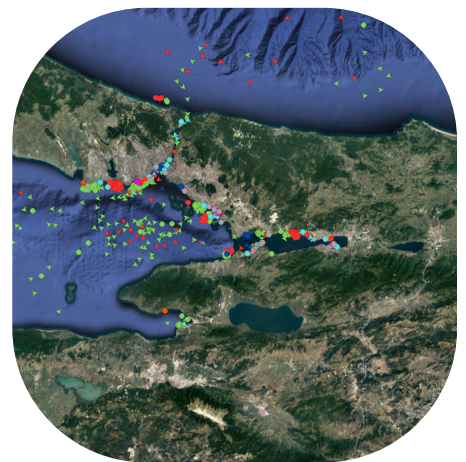
Gain complete control over your maritime tracking experience with Vesseldove's customizable map types and layers. From satellite views to maritime navigation charts, tailor the display to suit your operational needs. Effortlessly switch between layers for a comprehensive overview of vessel movements, weather patterns, and voyage density.



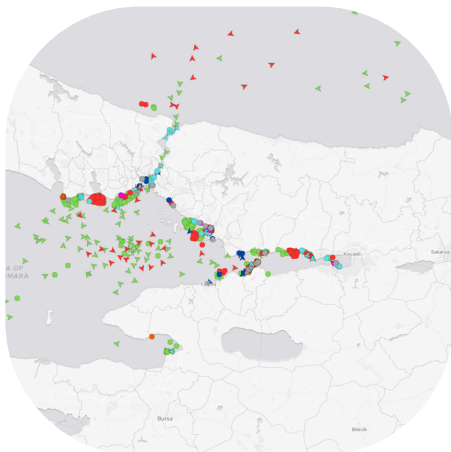
DARK MAP



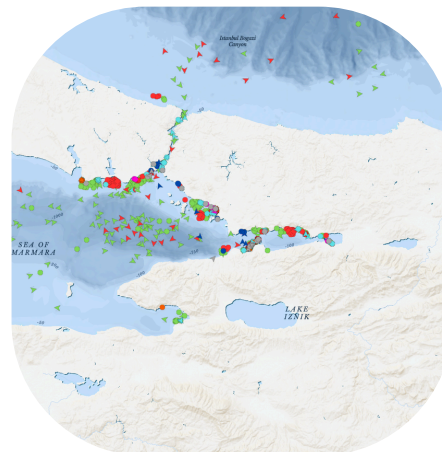
SATELLITE V2



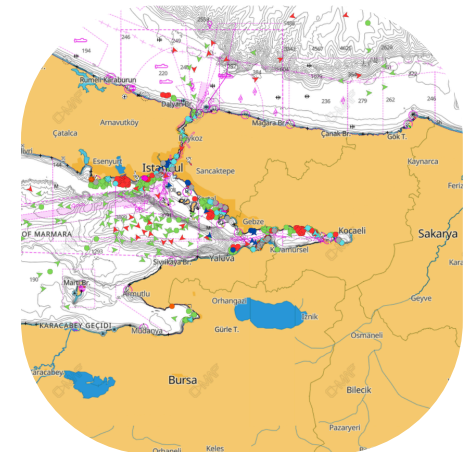
SATELLITE



LIGHT MAP



OCEAN

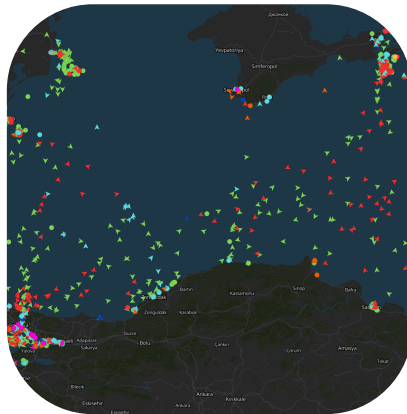


**NAUTICAL
CHARTS PLUS**

MAP LAYER



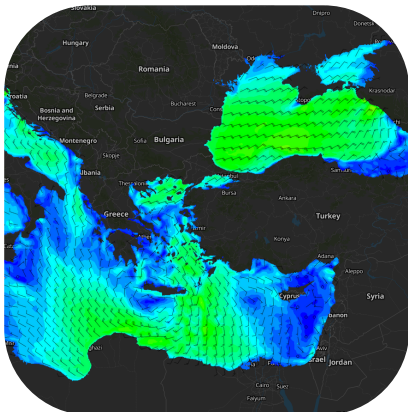
Port Layer



Ship Layer



Wave Height Layer



Wind Speed Layer



Wave Period Layer



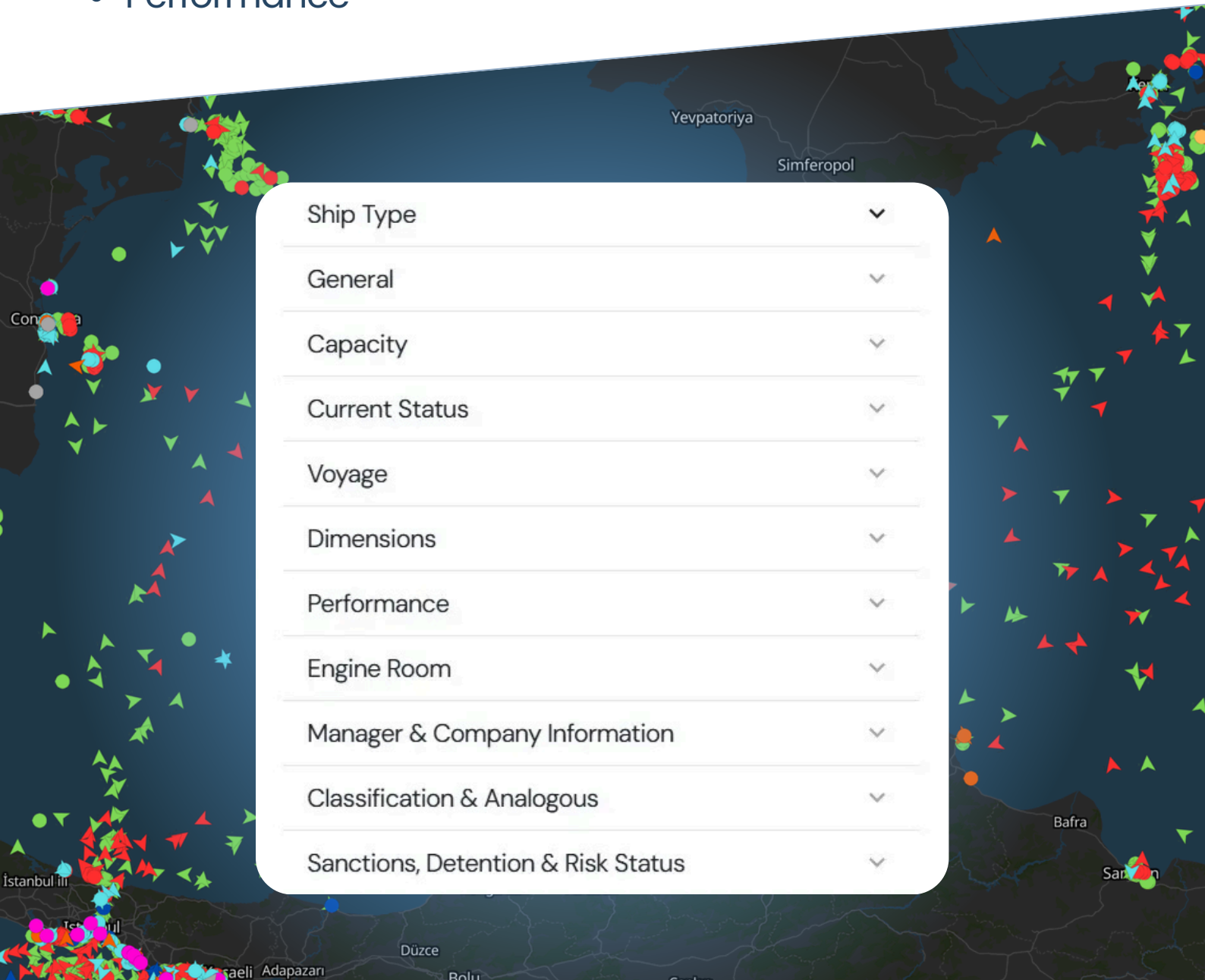
Density Layer

Map layers deliver a comprehensive, real-time view of maritime operations by integrating port locations, vessel positions, wave height and period data, wind speeds, and traffic density. This unified perspective enhances situational awareness, supports safer navigation, and improves overall operational efficiency.

Vessel Filters

Streamline your ship searches with our Vessel Filters! Filter by ship types, capacity, additional particulars, and current status

- Ship Type
 - General
 - Capacity
 - Current Status
 - Voyage
 - Dimensions
 - Performance
- Engine Room
 - Manager & Company Information
 - Classification and Analogous
 - Sanctions
 - Detention
 - Risk Status

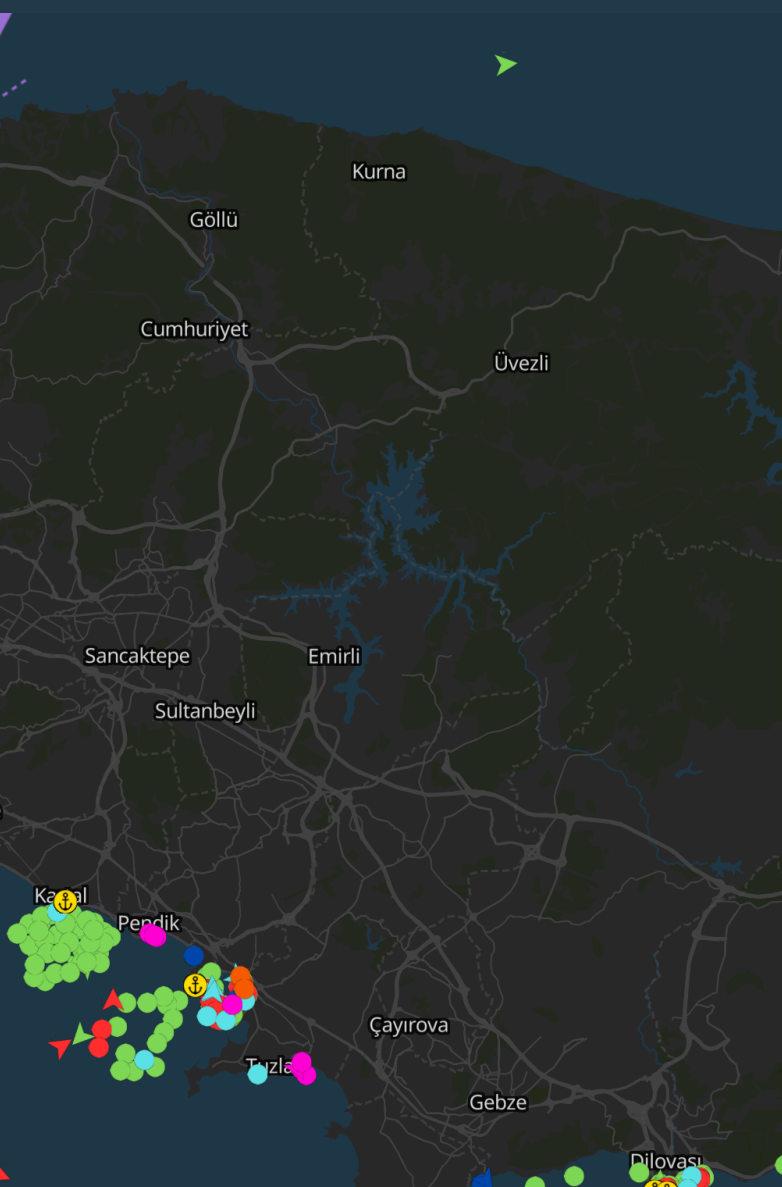


My Fleet

Effortlessly build and manage your fleet with our comprehensive platform.

Create your fleet, track each vessel in real time, and set up custom alerts to stay informed of any changes.

Optimize your operations with intuitive fleet management and monitoring tools.



My Fleets

☐ My Fleets

☒ Show Other Vessels

Fleet List

☒ inzur gemi

Count: 4

▼

☒ Atlantska

Count: 11

▼

☒ anchiota

Count: 1

▼

☒ Tankerska

Count: 13

^

☒ 9796731 FRANKOPAN

☒ 9334727 DUGI OTOK

☒ 9796743 RAVA

☒ 9334739 OLIB

☒ 9455741 VELEBIT

☒ 9489194 VINJERAC

☒ 9707819 VUKOVAR

☒ 9704441 ZOILO

☒ 9528134 DALMACIJA

☒ 9440514 PAG

☒ 9412294 UGLJAN

☒ 9489168 RAVNI KOTARI

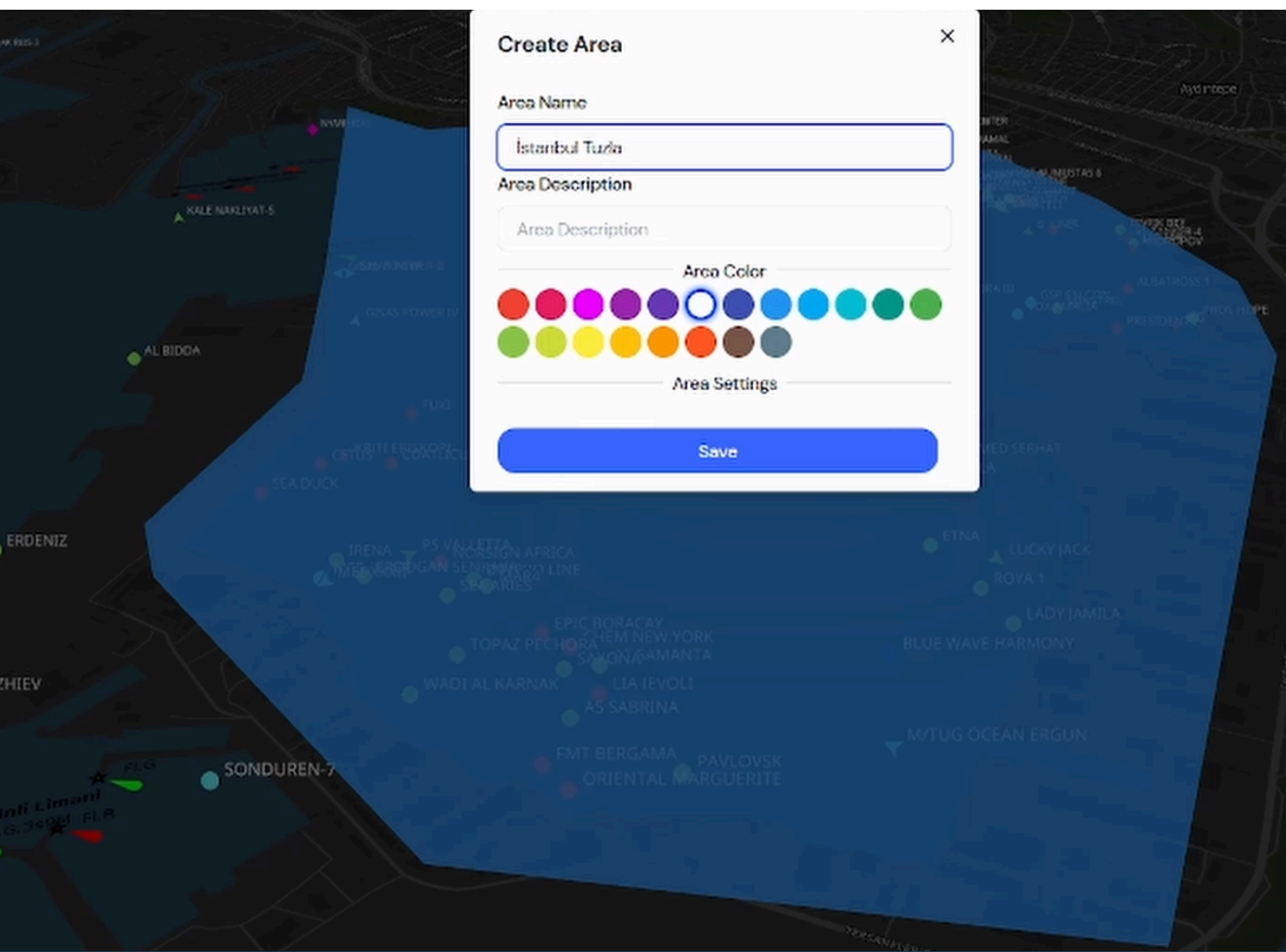
☒ 9489170 OBROVAC

Create Fleet

Area Selection

With Vesseldove's advanced zone-based monitoring tools, you can effortlessly select any specific maritime area and instantly view comprehensive information about the ships entering or operating within it.

This feature goes beyond simple location tracking by allowing you to create custom alerts that trigger the moment a vessel crosses a designated boundary or meets certain criteria—ensuring you're always aware of critical activity.



VESSEL DETAILS

Vesseldove's Vessel Detail section provides comprehensive information about ships, supporting operational analysis and informed decision-making processes.

From ship specifications to technical details, every critical piece of information is at your fingertips.



**Comprehensive
Information
Visualization**



**User Friendly and
Customizable Design**



**Analytical Insights
and
Predictive Maintenance
Planning**

**CE-BERMUDA**
9411226  Tanker for oil

 Voyage Progress

 Arrival Details

 **General Informations**

AIS Name	Type
CE-BERMUDA	Tanker for oil
IMO	MMSI
9411226	538008331
Shipyard Built	Year Built
Hyundai Samho Heavy Ind. Co., Ltd. (MOK)	2009
Lenght	Width
237 m	48 m
Speed	Course
7.2 kn	0°
GrossTonnage	Port Of Registry
81384 MTs	MAJURO

 Dimensions Informations

 Classification & Analogous In

 Engine Room Informations

 Ship Capacity & Equipment I

 ISM Manager Informations

 Registered Owner Information

 Ship Manager Informations 

 **Companies Other**

 MARINE TRUST LTD-MAI

VESSEL DETAILS

General Information

With its comprehensive general ship database, you can access all critical information from AIS Name to Flag information, IMO to construction details from a single platform.

Dimensions Information

Access key vessel dimensions and specifications to maintain regulatory compliance, efficiently optimize loading operations, and rigorously uphold safety standards.

Classification Analogous Informations

View each vessel's classification society details and upcoming survey deadlines in one place. Easily stay compliant, minimize unplanned downtime and keep your operations running smoothly.

Engine Room Information

With access to dddddd comprehensive machinery data, you can speed up decision-making, ddddd plan preventive maintenance and optimize operations to keep your vessel dddd running at peak performance.

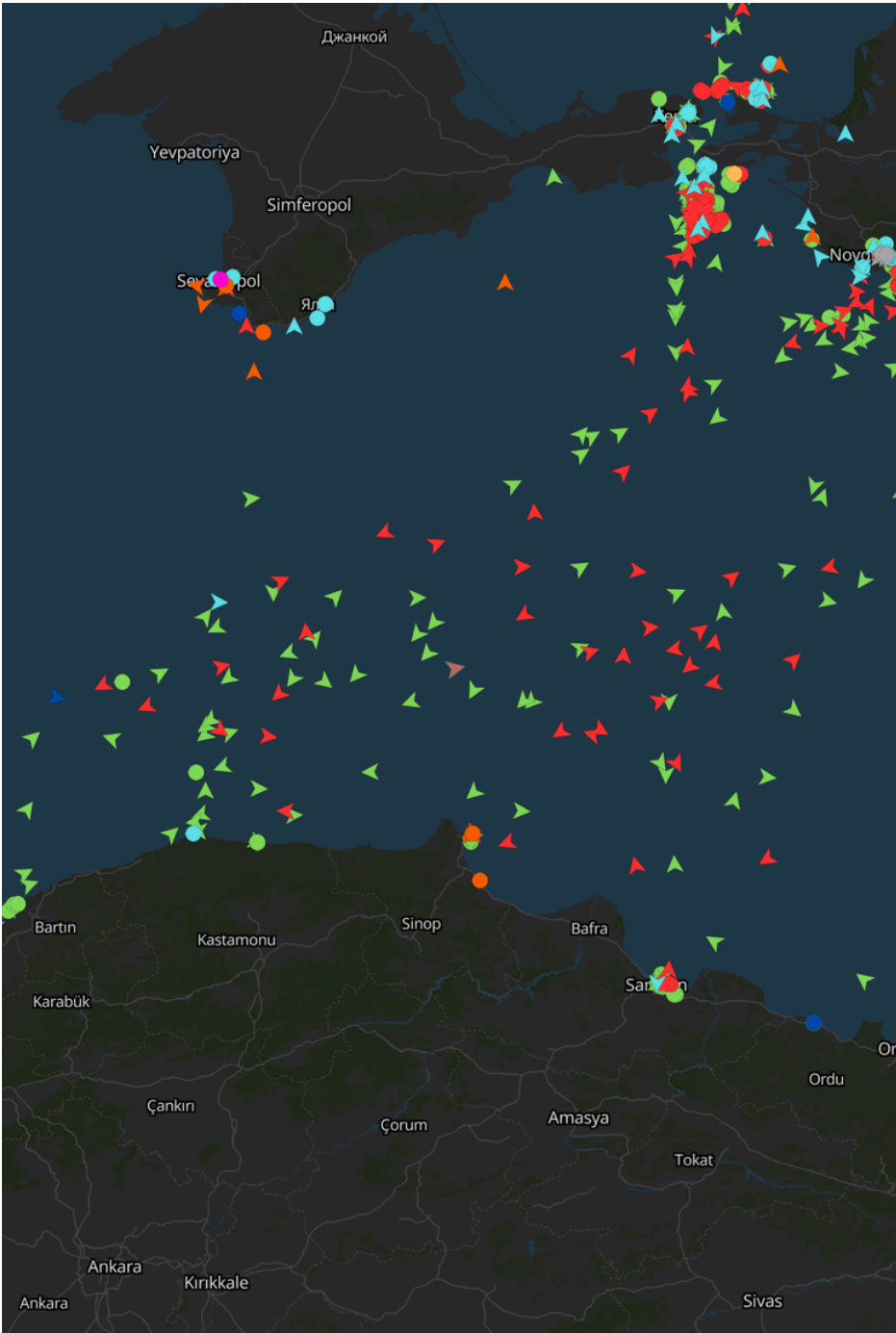
Ship Capacity Equipment Informations

Boost optimally operational efficiency with accurate capacity checks, load management, and more.

Management Information

Unify Ship Managers, Registered Owners, and ISM risk Managers under a single platform. Swift access real-time vessel tracking, robust in-depth analytics, and compliance protocols to optimize fleet performance, uphold safety standards, and fluidly sync with your marketing channels.

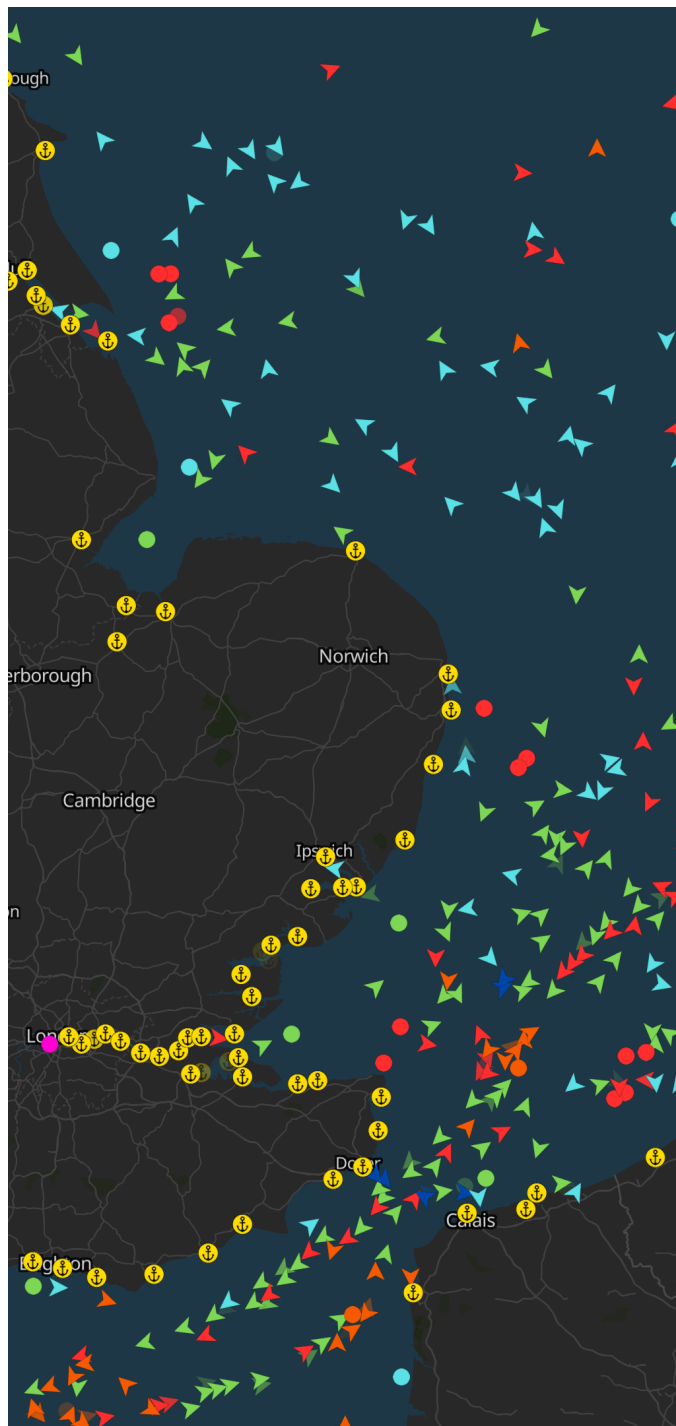
VESSEL DETAILS



With a user-friendly interface, teams can effortlessly manage all aspects of vessel data from classification details to engine room analytics ensuring maximum efficiency, fewer errors, and a strong competitive edge.

Thanks to its flexible architecture, the platform easily adapts to evolving business needs, allowing companies to scale operations and introduce new services without disrupting existing workflows.

Port Detail



Vesseldove, we offer comprehensive vessel information, detailed company profiles and solutions tailored to your operational needs.

🚢 INCOMING VESSEL

Monitor and analyze incoming vessel traffic to anticipate port congestion, improve docking schedules, and streamline resource allocation. Utilize historical data and predictive analytics to enhance operational efficiency and reduce waiting times for vessels.

🚢 VESSEL IN PORT

Track and manage vessels currently docked in the port to optimize loading and unloading operations, facilitate smooth crew transitions, and ensure compliance with port regulations. Real-time data integration enables better coordination between port authorities, shipping companies, and terminal operators, improving overall efficiency.

🚢 VESSEL AT ANCHOR

Supervise anchored vessels to enhance port security, manage available anchorage space efficiently, and maintain a well-organized queue for berthing. By leveraging real-time tracking and automated scheduling, ports can reduce unauthorized anchoring and improve response times for incoming vessels.

➡ DEPARTED VESSELS

Monitor vessel departures to ensure compliance with departure protocols, enhance logistics planning, and optimize route efficiency. By analyzing departure trends, ports can refine scheduling strategies, minimize turnaround times, and improve overall traffic flow in and out of the harbor.

ADVANCED DETAILS

mscgva.ch

X



About

MSC is a privately owned global shipping company founded in 1970 by Gianluigi Aponte. As one of the world's leading container shipping lines with head...

[Website](https://www.msc.com)
msc.com

[Linkedin](https://ch.linkedin.com/company/msc)
https://ch.linkedin.com/company/msc

[Industry](#)
Transportation, Logi...

[Founded Date](#)
1970

[Location](#)
12-14 Chemin Rieu, Geneva, 1208, CH

Employees

Markus Lippsmeier
SAP Deputy Manager

Delphine Muret

ilker dagli

Marc de Sinety

[Show all 10,001+ employees](#)

Similar Companies

CMA CGM
Transportation, Logistics, Supply Chain ...

12 Mail Address

info@mscgva.ch
operationsuy@mscuy.mscgva.ch
hhrr@mscar.mscgva.ch
gprudente@mscgva.ch
mscbordeaux@mscfr.mscgva.ch
jnieto@mscgva.ch
gianni.onorato@mscgva.ch
rjacobs@mscnl.mscgva.ch

24 Phone Number

[Send Email \(12\)](#)



Vesseldove's Company & People Detail section provides in-depth information on management structures and key stakeholders. Access essential insights such as management details, registered owner information, ship manager profiles, and ISM manager data. Enhance your maritime decision-making with comprehensive company and personnel profiles.

By consolidating all relevant data into one centralized platform, Vesseldove simplifies the process of evaluating business partnerships and assessing operational risk. Users can quickly verify compliance with maritime regulations, perform thorough due diligence, and make informed decisions about collaborations and contracts. This streamlined approach not only saves time but also helps maintain transparency and accountability across all levels of the maritime industry.

Marketing Automation



From	To	Sent at	Status	
info@vesseldove.com	vsmi-tanker@b...	2023-04-04 10:06:54.891418	delivered	●
info@vesseldove.com	chartering@b...	2023-04-04 10:06:58.509985	clicked	●
info@vesseldove.com	operation@o...	2023-04-04 10:07:02.162038	opened	●
info@vesseldove.com	fuden@k...	2023-04-04 10:07:05.824072	opened	●
info@vesseldove.com	socomar@...	2023-04-04 10:07:09.459209	opened	●
info@vesseldove.com	operation@h...	2023-04-04 10:07:13.093734	opened	●
info@vesseldove.com	chartering@p...	2023-04-04 10:07:16.825153	opened	●
info@vesseldove.com	stmich@...	2023-04-04 10:07:20.471990	opened	●
info@vesseldove.com	info@...	2023-04-04 10:07:24.155687	opened	●

Vesseldove allows you to manage your email marketing campaigns with maximum efficiency with advanced email management techniques.

Thanks to its smart algorithms, it automatically and target-orientedly delivers your promotional content to the e-mail addresses of the relevant companies in its database, increasing engagement.



POSSIBILITY OF CONTINUOUS GROWTH IN RECOGNITION AND BUSINESS VOLUME

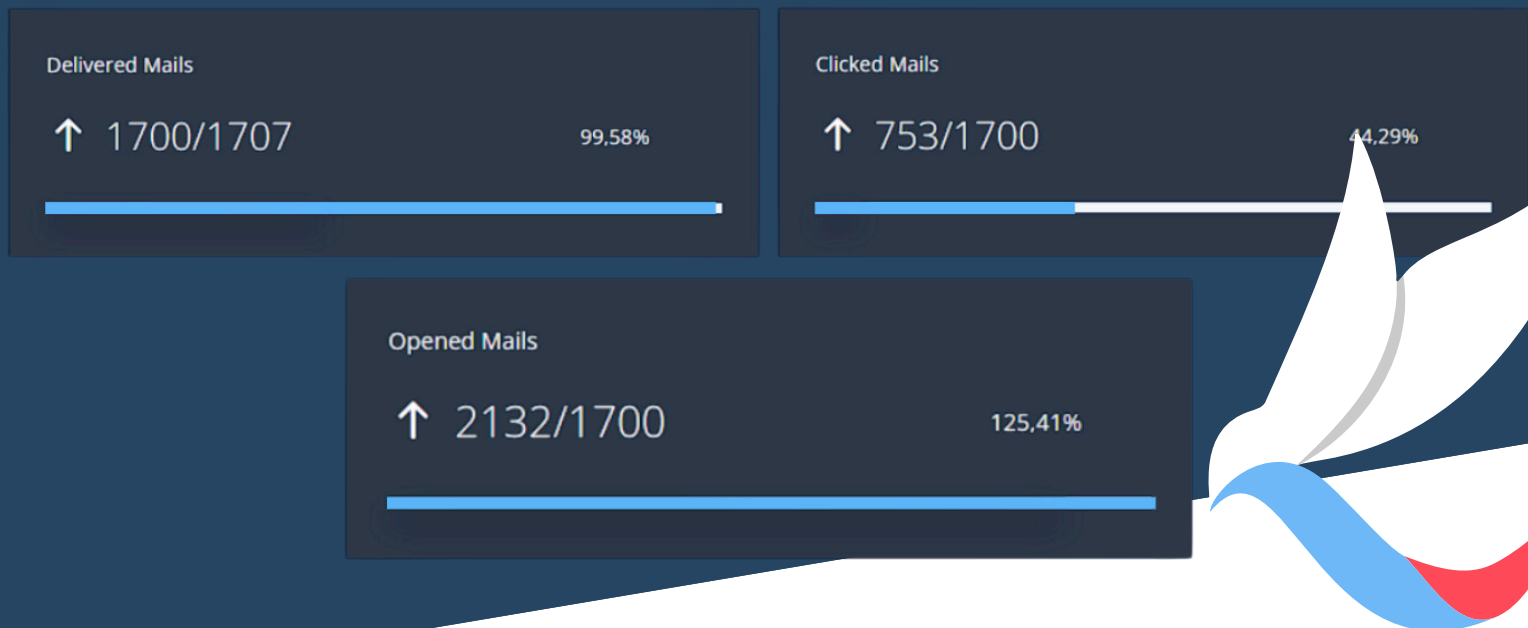


24/7 UNINTERRUPTED AUTOMATION

Increasing your e-mail quality by 120% with advanced spam filter optimization, Vesseldove increases the spam evaluation score of your messages to 10/10, minimizes the risk of falling into the spam folder and ensures that your messages reach directly to the inbox of the recipients.

Vesseldove offers integrated mail hosting and advanced mail management services with its powerful infrastructure, allowing you to control all your e-mail processes from a single platform.

Real Time Statistics



Vesseldove offers a robust, real-time analytics panel that empowers users to keep a close eye on every aspect of their email campaigns. From the moment messages are dispatched, Vesseldove automatically logs crucial engagement metrics—such as delivery success, open rates, link clicks, and more—presenting these insights in a centralized dashboard for easy access. This continuous flow of data is compiled into comprehensive reports, allowing users to quickly gauge the effectiveness of their outreach and make informed adjustments to their strategy.

Moreover, every recipient action is meticulously recorded, giving Vesseldove users detailed visibility into how their audience interacts with each email. Whether it's confirming that messages have been received, analyzing which subject lines generate the most opens, or identifying the specific links that attract the most clicks, Vesseldove's in-depth reporting capabilities offer a clear, actionable view of campaign performance.

Best of all, getting started with Vesseldove requires no installation or specialized technical knowledge. The platform is designed with user-friendliness in mind, ensuring that anyone—from small businesses to large enterprises—can immediately begin sending, tracking, and analyzing emails without any hassle. This simplicity lets teams focus on crafting compelling content and building meaningful relationships with their audience, rather than getting bogged down in complex setup or configuration processes





VESSELDOVE

Prepared for
VESSELDOVE

2025